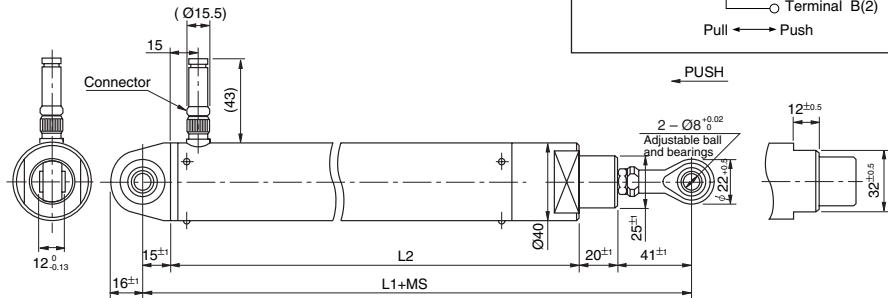


OF40LP



Wirewound – Oil filled

Standard Dimensions

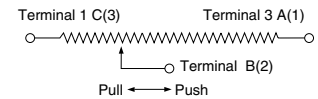


Model No.	Mechanical Stroke (MS)	L1	L2
OF40LP100	Approx. 105	328	252
OF40LP200	Approx. 205	428	352
OF40LP300	Approx. 305	528	452

Specifications of Connector

Water-proof type
Number of poles: 6 poles
Electrical wire diameter to be connected: Ø6.3mm max.

Terminal Connection Diagram



General Specifications

Model	OF40LP100	OF40LP200	OF40LP300
Standard Resistance Values	See tabel below		
Independent Linearity	Standard Class	±0.5%	±0.3%
	Precision Class	±0.25%	±0.1%
Electrical Stroke	100 ±1 mm	200 ±1 mm	300 ±1 mm
Mechanical Stroke	~ 105 mm	~ 205 mm	~ 305 mm
Stopper strength	Approx 90 N		
Noise	Below 100Ω E.N.R.		
Power Rating	1.0 W	2.0 W	3.0 W
Resist. Temperature Coefficient of Wire	±20 p.p.m./°C		
Weight	~ 1 kg	~ 1.2 kg	~ 1.5 kg

Standard Resistance Values • No. of Wire Turns • Resistance Wire Used

Resistance Value (Ω) ±5%	100	200	500	1k	2k	5k	10k	20k	50k	100k
OF40LP50	530	670	910	800	1,000	1,400	1,700	2,200	–	–
OF40LP100	830	1,050	1,400	1,800	1,600	2,200	2,850	3,450	4,900	–
OF40LP200	–	1,400	1,900	2,400	2,200	3,000	3,800	4,750	6,450	8,000*
Resist. Wire Used	Cu-Ni System					Ni-Cr System				

Note: Mark * shows values at special higher practical resistance.

Environmental Specifications

Operating Temperature Range	~ -30 °C – +60 °C
Shock	30 g
Vibration	10 Hz to 2,000 Hz, 10 g
Life Expectancy	~ 5,000,000 shaft reciprocating motions
Sealing	IP 54 (shaft)

Special Specification Examples

Better tolerances of resistance and linearity. Fractional resistance values. Other electrical or mechanical angles. Stroke 500 mm (SOF40LP500).
1 extra tap. Special machining on the shaft. Non-oil-filled type. With conductive plastic resistive element.

Subject to change without prior notice. We refer to our general terms and conditions.

Contact:	E-mail info@caldaro.com	Main +46 (0)8 736 12 70
	Internet www.caldaro.com	United Kingdom 0800 169 7950
		Germany +49 (0)6136 760 56 00